

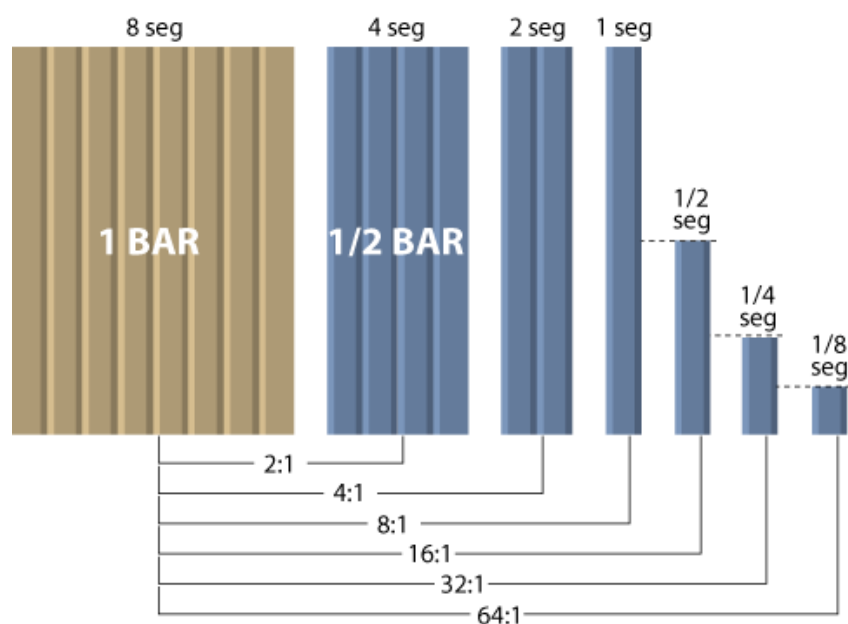


tips & techniques

by Donna Kato



Mixing Chart



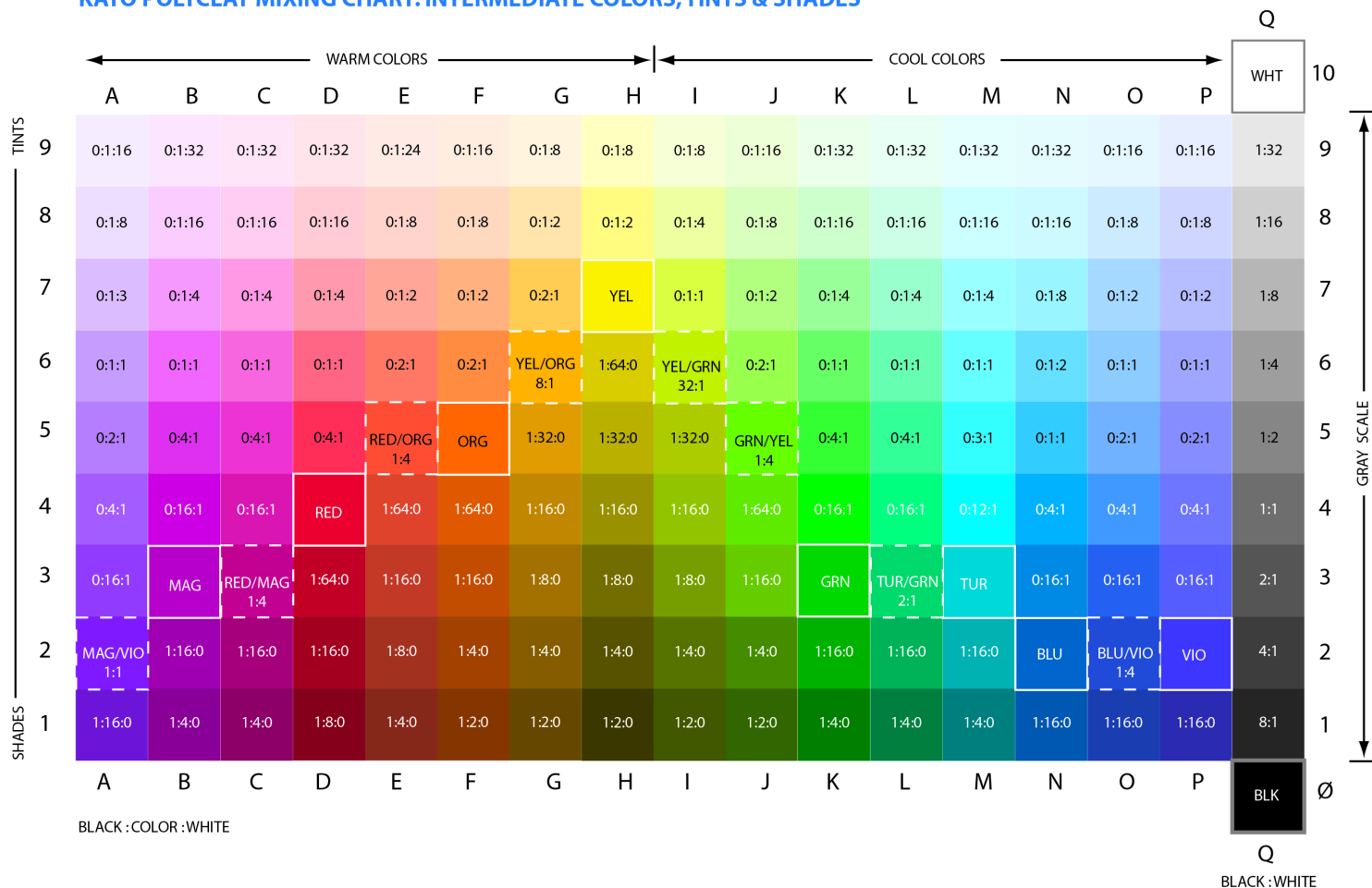
Bar Design

Kato Polyclay bars are specially designed to facilitate color mixing. Because they are scored into 8 visible sections, Kato Polyclay bars can be easily cut into segments; this makes it easy to mix the correct amount of each color to create your desired mixture.

When creating your own color recipes, cure a small sample that is big enough to write on. When cured, record the parts per color in your mixture, so you can reproduce the same color again.

The Kato Polyclay Mixing Chart makes creating the perfect color easy. The parts-per-color are represented by the two or three part ratio shown on each color square.

KATO POLYCLAY MIXING CHART: INTERMEDIATE COLORS, TINTS & SHADES



STANDARD COLORS

These are the standard colors available in the Kato Polyclay line. Each of these colors has a solid outline and has an abbreviation of the color on its face. None of these color tiles have ratios.

MAG	RED	ORG	YEL	GRN	TUR	BLU	VIO	BLK	WHT
B-3	D-4	F-5	H-7	K-3	M-3	N-2	P-2	Q-Ø	Q-10
Magenta	Red	Orange	Yellow	Green	Turquoise	Blue	Violet	Black	White

SHADED COLORS

Adding Black to a color creates a Shade, or darkened color. These colors are located on the bottom half of the color chart. The ratios given represent the parts of Black, to the parts of the Color, to the parts White (which will always be 0 when creating a shade).

1:4:0	This shade of Orange is made by adding 1 part	BLK	with 4 parts	ORG
F-2		Q-Ø		F-5
		Black		Orange

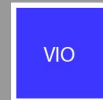
TINTED COLORS

Adding White to a color creates a Tint, or a lightened color. These colors are located above the line of standard and intermediate colors. The ratios given represent the parts of Black (which will always be 0 when creating a tint), to the parts of the Color, to the parts of White.



P-5

This tint of Violet is made by adding 2 parts



P-2
Violet

with 1 part



Q-10
White

INTERMEDIATE COLORS

Mixing two standard colors creates an intermediate color. These colors are outlined with a dashed white line. Each of these color tiles has an abbreviation of the two colors used to create them, and a ratio of these colors.



E-5
Red Orange

This intermediate color is made by adding 1 part



D-4
Red

with 4 parts



F-5
Orange

Tints and shades for Red Orange are mixtures of this intermediate color with White or Black.

GRAY SCALE COLORS

Mixing White and Black in different amounts creates Gray Scale colors. The ratio given for these colors is always parts Black to parts White.



Q-7

This gray scale color is made by adding 1 part



Q-0
Black

with 8 parts



Q-10
White