

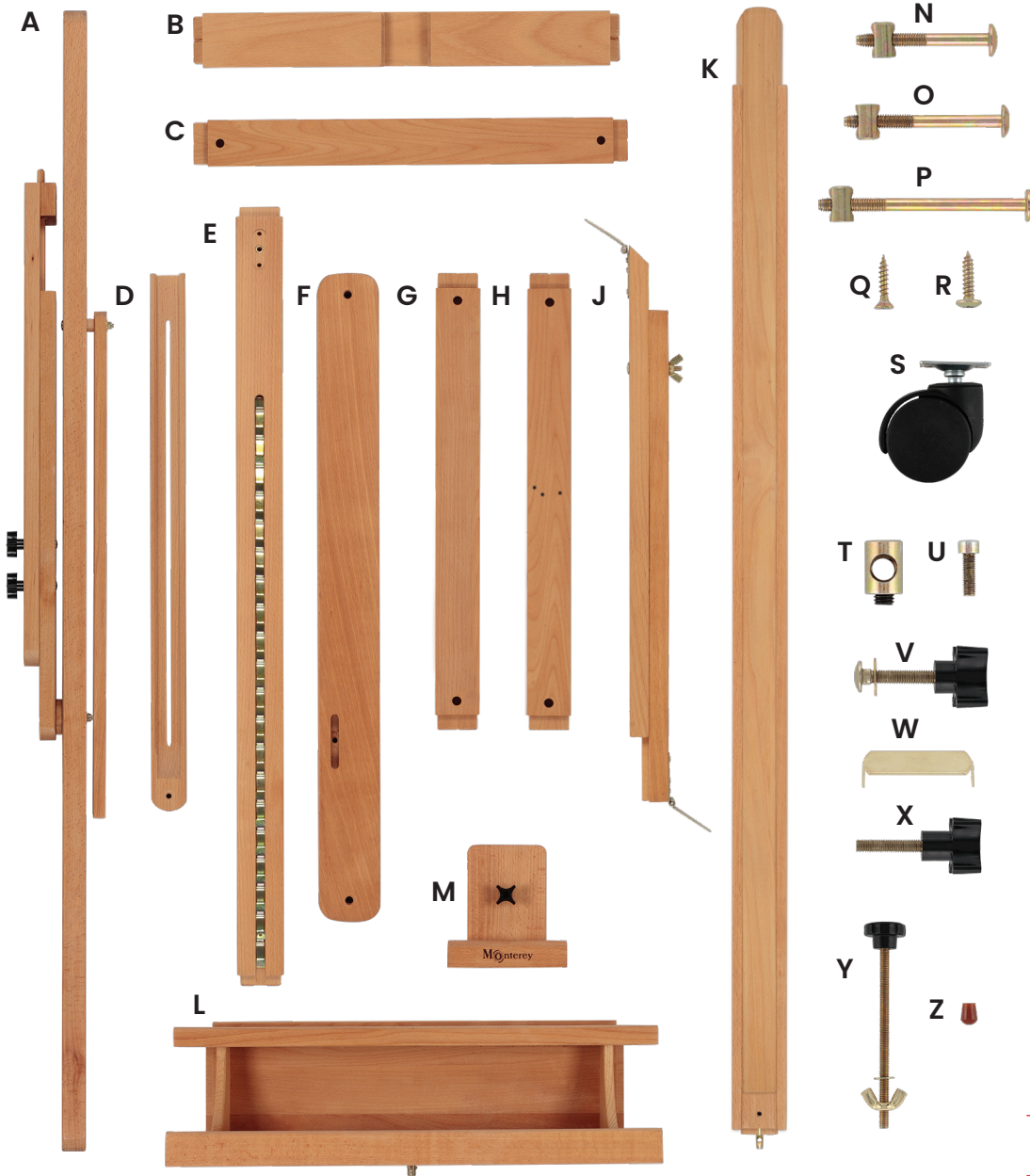
- Multi-angle: Vertical, Horizontal, Forward tilt
- Holds material up to 48" wide to 94.5" high
- Weighs 62 lbs. with four casters & leveling bolts

## Parts & Hardware

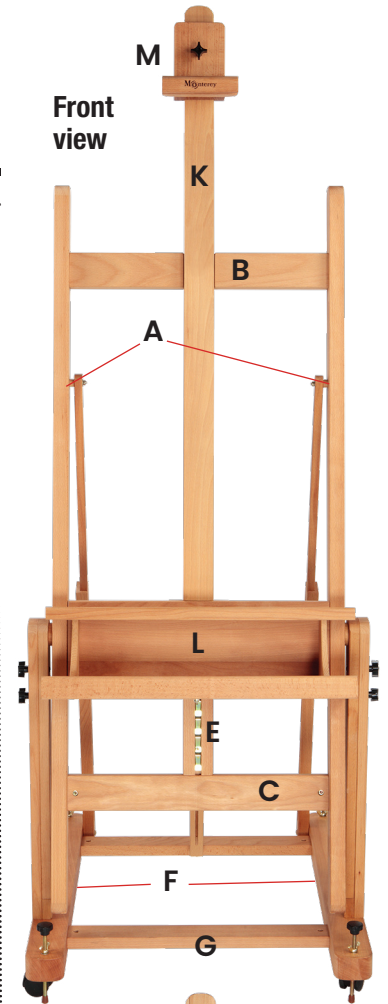
Check contents of box to ensure no parts are missing.  
TWO people are recommended to assemble easel.

- |  |  |                                 |
|--|--|---------------------------------|
| <b>A</b> H-Frame Side Assembly × 2           | <b>K</b> Mast Assembly (w/brass plate) × 1 | <b>T</b> Shelf bolt × 1         |
| <b>B</b> H-Frame Top Support × 1             | <b>L</b> Canvas Support Shelf × 1          | <b>U</b> Stopping bolt × 1      |
| <b>C</b> H-Frame Bottom Support × 1          | <b>M</b> Top Canvas Holder × 1             | <b>V</b> Knob assembly × 2      |
| <b>D</b> H-Frame Side Support Bars × 2       | <b>N</b> Small bolt/barrel nuts × 6        | <b>W</b> Brass plates × 2       |
| <b>E</b> Mast Adjustment Bar × 1             | <b>O</b> Medium bolt/barrel nuts × 2       | <b>X</b> Adjustment knobs × 2   |
| <b>F</b> Base Foot Bars × 2                  | <b>P</b> Large bolt/barrel nuts × 4        | <b>Y</b> Leveling bolts × 4     |
| <b>G</b> Base Front Cross Brace × 1          | <b>Q</b> Wood screws × 6                   | <b>Z</b> Leveling bolt caps × 4 |
| <b>H</b> Base Back Cross Brace (w/holes) × 1 | <b>R</b> Caster screws × 16                |                                 |
| <b>J</b> Angled Support Bar × 1              | <b>S</b> Casters × 4                       |                                 |

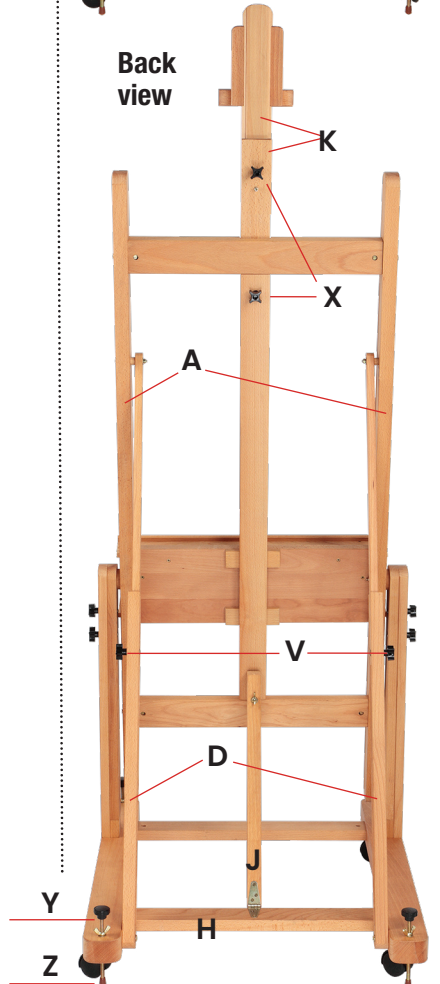
**Allen Wrench is included. Additional tools needed: Phillips & Flat-head screwdrivers**



**Front view**



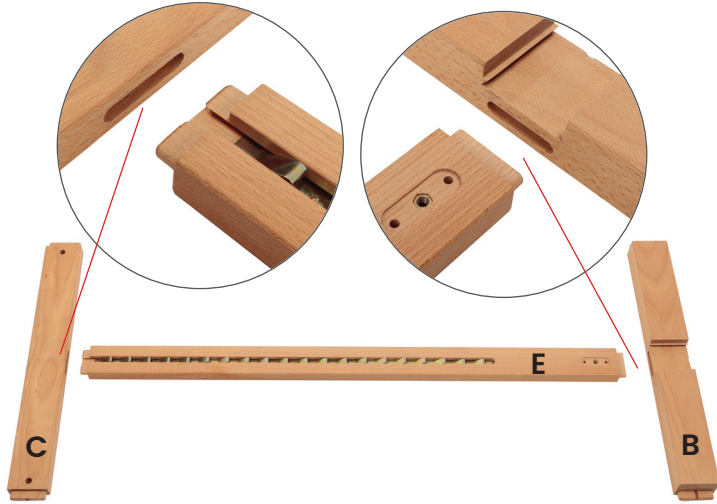
**Back view**



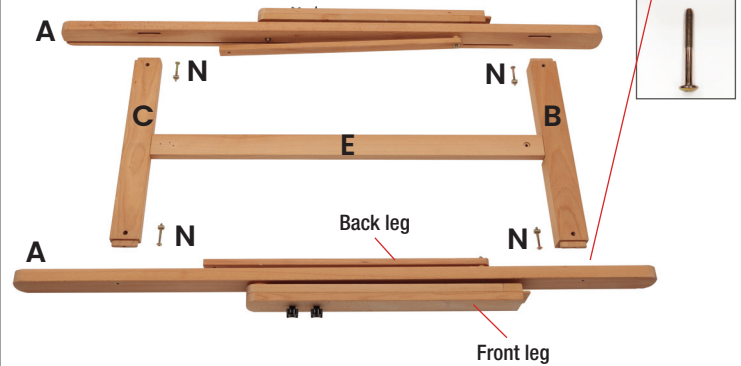
## Assembly Details

Carefully review all steps before proceeding.  
We recommend TWO people to assemble this easel.

**STEP 1** Slide the **H-Frame Top and Bottom Support (B&C)** onto the **Mast Adjustment Bar (E)**.  
Carefully flip over (the boards are not attached - adjust if needed).

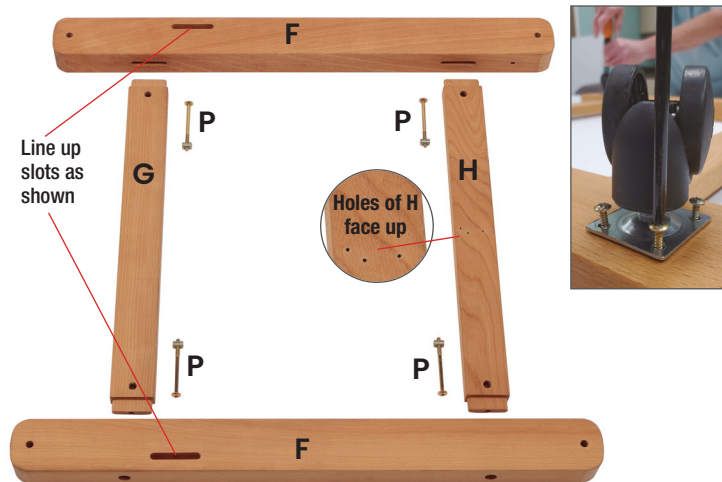


**STEP 2** Carefully arrange as shown below. Insert each end of **B&C** into the corresponding slots of the **H-Frame Side Assembly (A)**. Secure using **4 small bolt/barrel nuts (N)** and tighten with the included Allen wrench. Use a Flat-head screwdriver to keep the barrel nut straight.



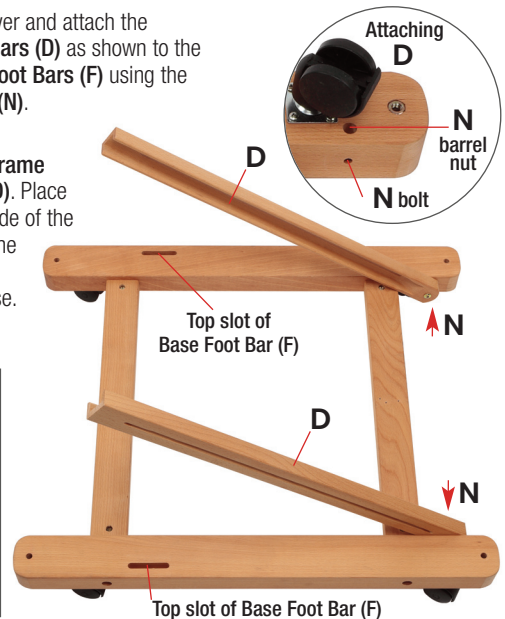
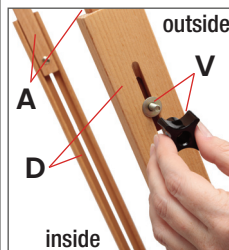
**STEP 3** Attach the **Front and Back Cross Braces (G&H)** into the **Base Foot Bars (F)** as shown using **4 large bolt/barrel nuts (P)**. Tighten with the Allen wrench. Flip over to attach casters.

Attach all **casters (S)** using the **caster screws (R)** and Phillips screwdriver.

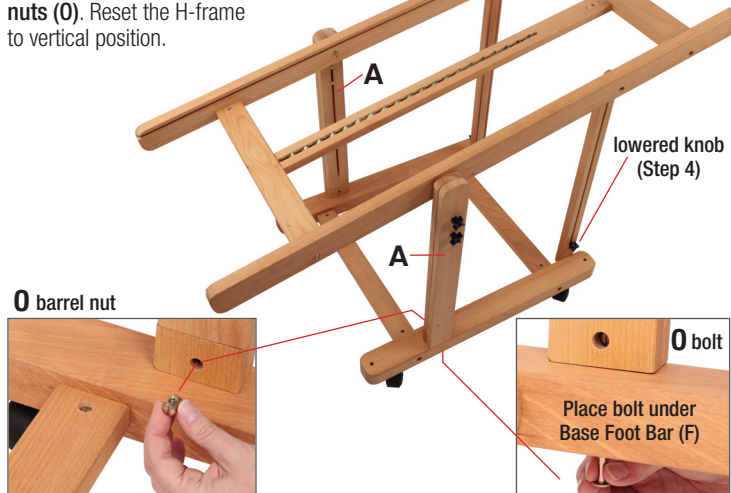


**STEP 4** Flip back over and attach the **H-Frame Side Support Bars (D)** as shown to the insides of the rear **Base Foot Bars (F)** using the **2 small bolt/barrel nuts (N)**.

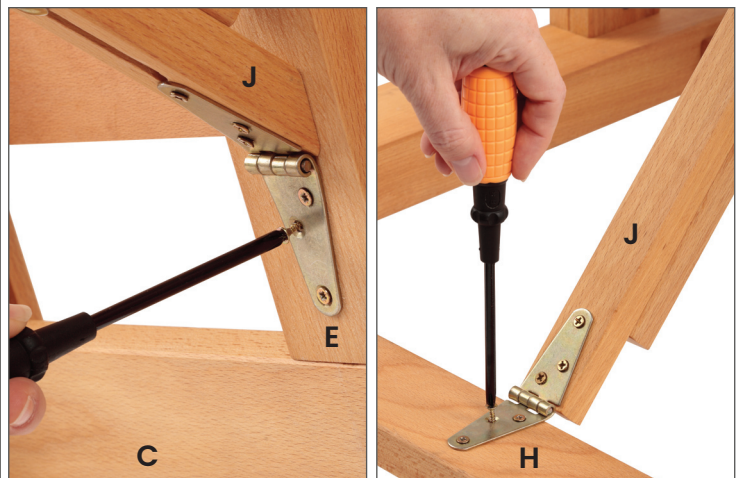
Slide the back legs of **H-Frame Side Assembly (A)** into (D). Place the washer on the outer side of the wood. Attach each using the **Knob Assembly (V)**, then lower the knobs to the base.



**STEP 5** Attach the front legs of the **H-Frame Side Assemblies (A)** into the top slots of the **Base Foot Bars (F)** (refer to Step 4 image). Secure using the **medium bolt/barrel nuts (O)**. Reset the H-frame to vertical position.



**STEP 6** Attach the slanted end of the **Angled Support Bar (J)** to the back, lower end of the **Mast Adjustment Bar (E)** using **3 of the Wood Screws (Q)** and Phillips screwdriver. Attach the other end to the **Base Back Cross Brace (H)** using the rest of the wood screws.

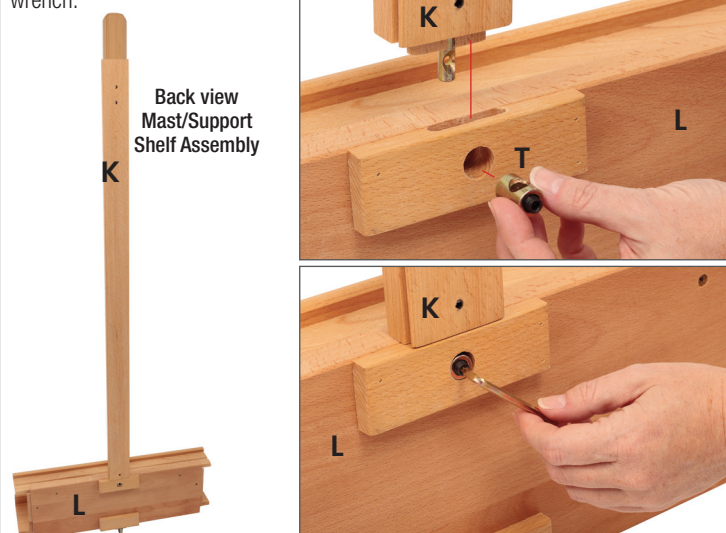




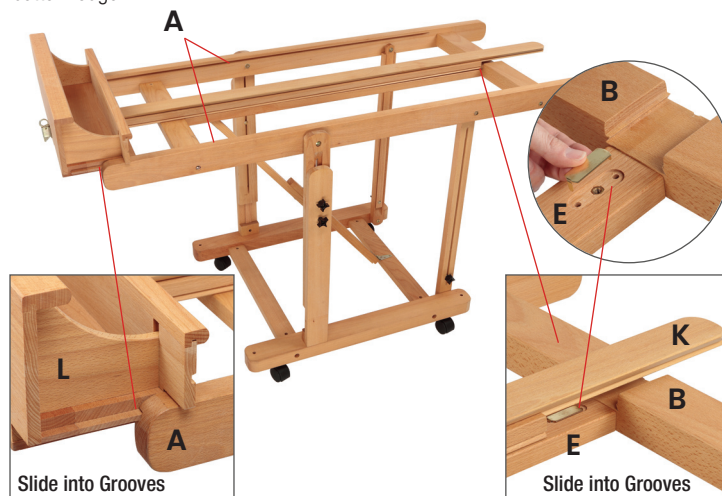
## Assembly Details Continued

Carefully review all steps before proceeding.  
We recommend TWO people to assemble this easel.

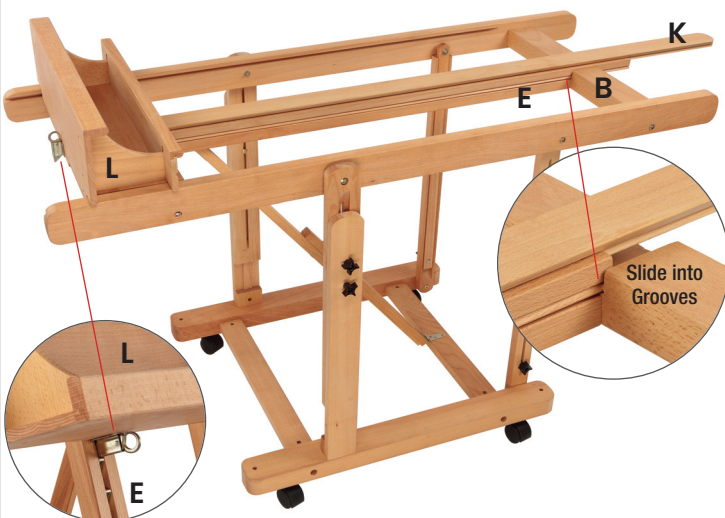
**STEP 7** Insert the **Shelf bolt (T)** into the back of **Canvas Support Shelf (L)** then insert the **Mast Assembly (w/brass plate) (K)** and tighten **T** with the Allen wrench.



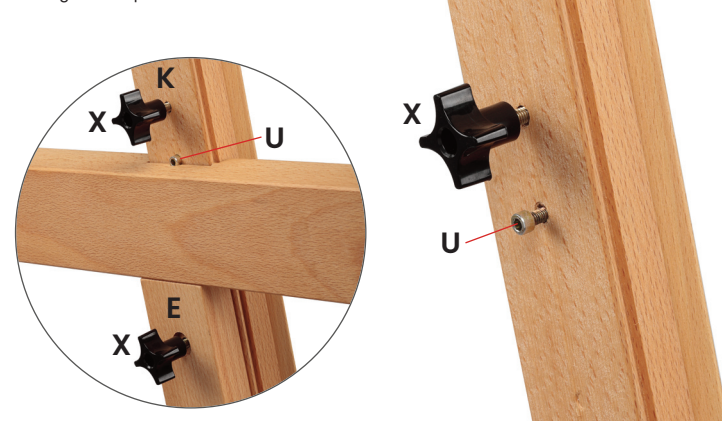
**STEP 8** Set the **H-Frame Assembly** to horizontal position. Place a **Brass Plate (W)** in the holes of the **Mast Adjustment Bar (E)**. Slide the **Mast/Support Shelf Assembly (Step 7)** into the grooves of the **H-Frame (A)** starting from the bottom edge.



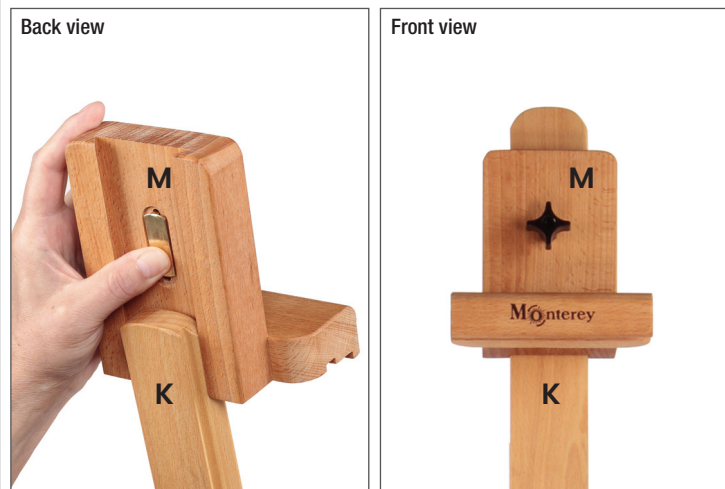
**STEP 9** Slide the **Mast/Support Shelf Assembly (Step 7)** through the **H-Frame Top Support Bar (B)** and continue sliding until the shelf's adjustment key locks into place on the **Mast Adjustment Bar (E)**.



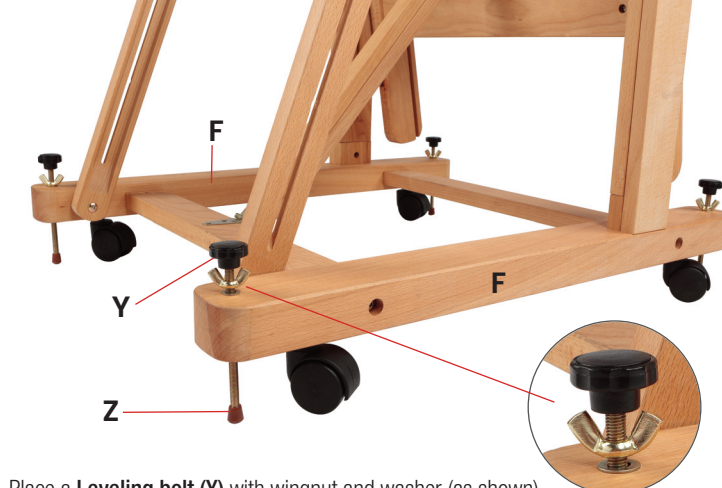
**STEP 10** Stand the **H-Frame** up and attach an **Adjustment knob (X)** to the top back of the **Mast Assembly (K)**. Add the **Stopping Bolt (U)** to the hole just under the **Adjustment knob (X)** and tighten in place. Attach another **Adjustment knob (X)** to the top back of the **Mast Adjustment Bar (E)** and tighten in place.



**STEP 11** Place a **brass plate** in the groove at the back of the **Top Canvas Holder (M)**. Slide into place on the top of the **Mast Assembly (K)** and tighten the front knob.



**STEP 12**



Place a **Leveling bolt (Y)** with wingnut and washer (as shown) through the holes in each corner of the **Base Foot Bars (F)**, then place a **Leveling bolt cap (Z)** on the end of each bolt. Adjust and tighten wingnuts to accommodate uneven floors. **Your easel assembly is now complete!**