

Saint Rémy™

Multi-Angle Wood Studio Easel

Guide to Assembly

The Saint Remy Multi-Angle Wood Studio Easel allows you to paint and varnish even the largest canvas. If you paint small you can actually paint two canvases side by side — even of different heights! It is made of smoothly sanded, oiled Beech wood and is superbly crafted to function flawlessly. It's wide mast allows you to paint pictures up to 60" wide and 82" high ... plus you can paint at any angle — even flat — making it the perfect support for art in most media!

Carefully read through all instructions before proceeding.



Maximum height: 114 inches
Minimum height: 78 inches
Base: 31.5 in. W x 30.25 in. D
Weight: 43 lbs.



Hardware Packs*

Carefully check the contents of the box to ensure all parts are included.

Pack A: (4) 2½" bolts, (4) ¾" barrel nuts

Pack B: (16) ⅝" woodscrews

Pack C: (2) 2½" bolts, (2) ¾" barrel nuts

Pack D: (8) 1" woodscrews

Pack E: (2) ratchet systems, (8) woodscrews

Pack F: (4) 2½" bolts, (4) ¾" barrel nuts

Pack G: (2) 1⅞" wood washers, (2) ⅝" brass washers, (2) black plastic turn knobs, (2) 3" bolts

Pack H1: (2) ⅝" brass washers, (2) 1¼" bolts, (2) black plastic turn knobs

Pack H2: (2) ⅝" brass washers, (2) 2¼" bolts, (2) black plastic turn knobs

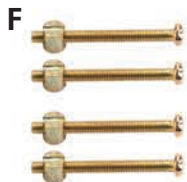
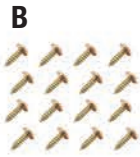
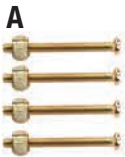
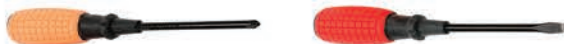
Pack H3: (2) ⅝" brass washers, (2) 5" bolts, (2) black plastic turn knobs

Pack I: 1⅞" bolts, hex wrench

Pack J: (4) black plastic turn knobs (short) (2) black plastic turn knobs (long)



Screwdrivers Included



(4) Brass Pressure Plates

Parts* *Be sure to read through and understand all instructions before proceeding.*



Part 1 (2)



Castors (4)



Part 6 (1)



Part 2 (2)



Part 7 (2)



Part 8 (1)



Part 3 (2)



Part 9 (2)



Part 4 (2) & 12 (2)



Part 10 (2) & 11 (2)



Part 5 (1)



Part 13 (2)



Base Blocks (2)

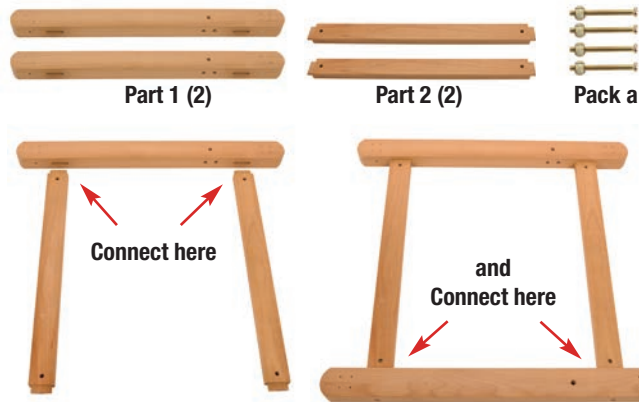
*Hardware & Parts not to scale

Assembly Instructions

STEP 1

You will need: **Pack A, Part 1, Part 2**

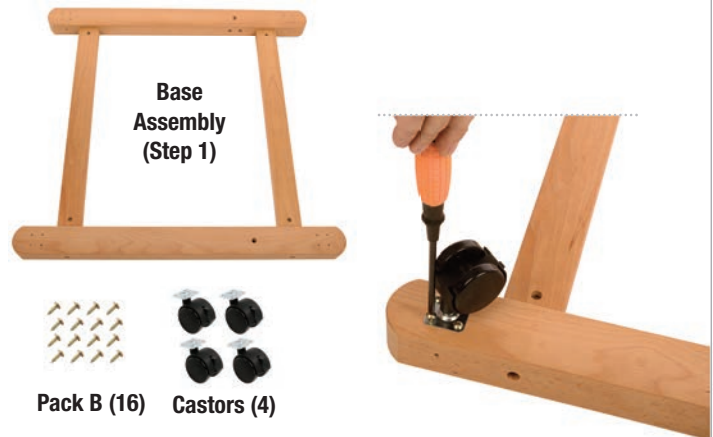
Assemble the wooden parts as the picture shows and secure using the hardware from **Pack A**. The barrel nuts will be placed into the bottom of **Part 2** while the bolts will be inserted through the sides of **Part 1**. Tighten the bolts into the barrel nuts.



STEP 2

You will need: **Pack B, Castors, Base Assembly (Step 1), Screwdriver**

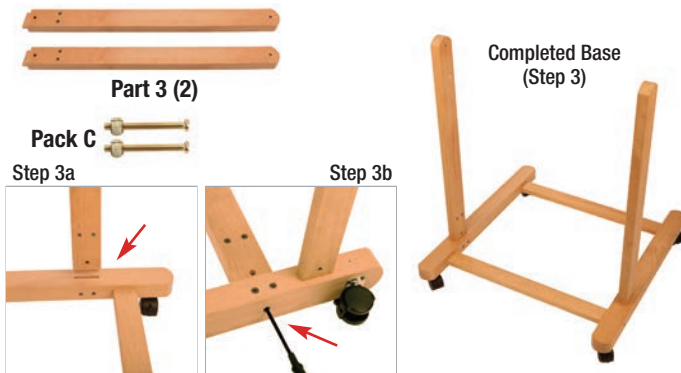
Using the supplied Phillips screwdriver, turn the **Base Assembly** over and attach the (4) castors with the (16) 5/8" woodscrews from **Pack B** in the pre-drilled guide holes. There will be 4 woodscrews for each castor.



STEP 3

You will need: **Pack C, Part 3, Base Assembly (step 1 & 2), Screwdriver**

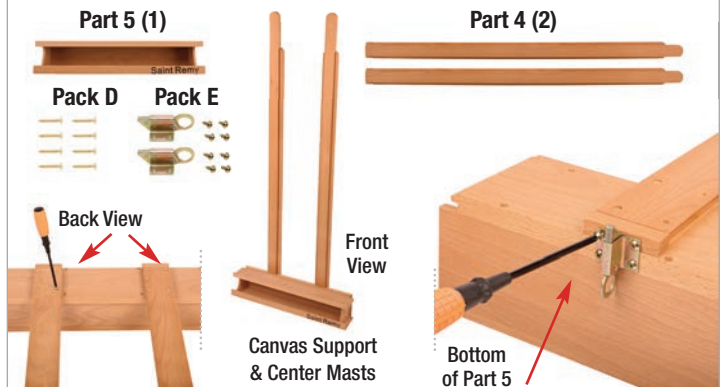
Insert **Part 3** into the top of the base as shown in Step 3a. Secure to the **base** by placing the barrel nut into the inner side of each **Part 3**. Insert the bolt through the bottom of the base and tighten into the barrel nut as shown in Step 3b. Repeat for additional side.



STEP 4

You will need: **Pack D, Pack E, Part 4, Part 5, Screwdriver**

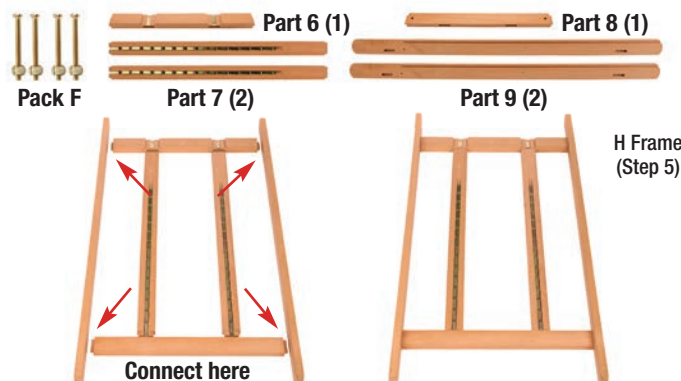
Attach **Part 4** to the back of **Part 5** using (4) 1" woodscrews from **Pack D** (8 total) in the pre-drilled guide holes. Repeat. Use the woodscrews from **Pack E** to attach the (2) ratchet systems to the bottom of **Part 5** using the pre-drilled holes.



STEP 5

You will need: **Pack F, Part 6, Part 7, Part 8, Part 9, Screwdriver**

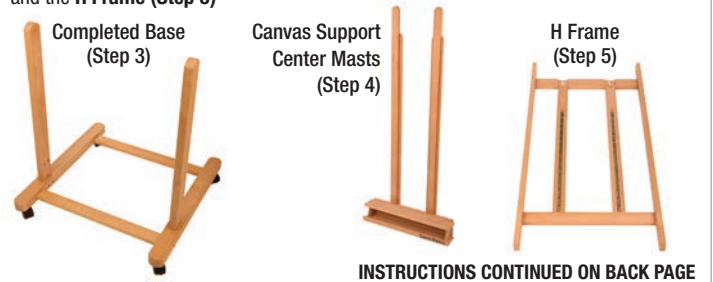
Insert both **Part 7** pieces into the bottom of **Part 6**. Slide **Part 8** onto the bottom of both **Part 7** pieces. Take both **Part 9** boards and place on the sides of **Part 6** and **Part 7** as shown. Secure these by sliding the barrel nuts into the back side of **Part 6** and **Part 7**. Insert the bolts through the sides of **Part 9** and tighten the bolts into the barrel nuts.



STEP 6

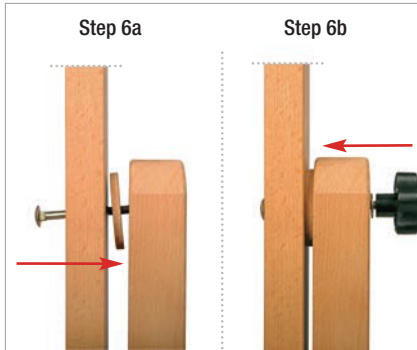
You will need: **Pack G, Pack H1, Pack H2, Pack H3, Part 10, Part 11**

You will also need: **Completed Base (Step 3), Canvas Support/Center Masts (Step 4), and the H Frame (Step 5)**



STEP 6 (Continued)

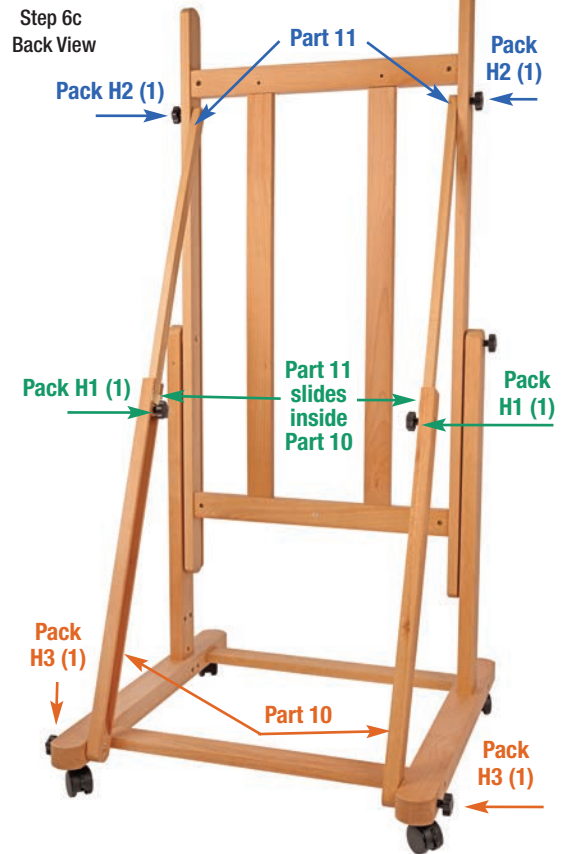
Attach the **H Frame** between the two uprights (Part 3/Step 3) of the **Base**. While holding frame in place, put the two bolts through the uprights and into the **H Frame** (Step 5). Add the wooden washers in between the upright and the **H Frame** as shown in **Step 6a**. Once the bolt is through the **H Frame**, add the brass washers and tighten the black plastic knob until secure as shown in **Step 6b**.



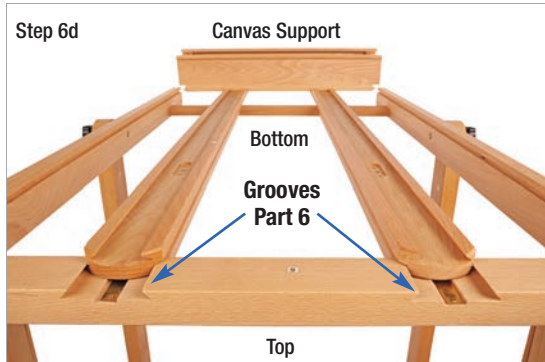
Attach (1) **Part 11** to the inside of the **H Frame** near the upper crossbar (Part 6 in Step 5). Insert (1) bolt from **Pack H2** through the pre-drilled holes in **Part 11**. Add the washer, then the knob on the outside of the **H Frame**. Repeat for the other side.

Slide (1) **Part 10** around the attached **Part 11** and secure with bolt from **Pack H1** on the outside. Add the washer, then the knob on the inside of **Part 11**. Repeat for the other side.

Attach **Part 10** to the **Base** using **Pack H3** with the knob on the outside of the **Base**. Repeat for the other side. **All instructions are shown in Step 6c Back View.**

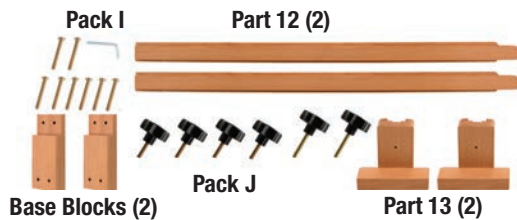


Once complete, tilt the easel and slide the **Canvas Support /Center Mast (Step 4)** onto the the **H Frame** from the bottom cross bar (Part 8 in Step 5) into the grooves in the upper crossbar (Part 6 Step 5) as shown in **Step 6d**.



STEP 7

You will need: **Pack I, Pack J, Base Blocks, Part 12, Part 13**



Attach the **Base Blocks** using **Pack I** to secure the **Base Uprights (Step 3/Part 3)** as shown in **Step 7a**.

Place (2) **Brass Pressure Plates** into the holes inside the groove of **Center Mast** as shown in **Step 7b** and slide both **Part 12s** onto the two **Center Masts**. Secure with (1) **Long knob** and (1) **Short knob** on both sides as also shown in **Step 7b**. Slide **Part 13** onto each **Part 12**. Place the final (2) **Brass Pressure Plates** into the holes on the back of **Part 13** and secure **Part 13** into **Part 12** with the final (2) **Short knobs** as shown in **Step 7c**.

Review the placement of knobs in **Front View** and **Back View** photos.

