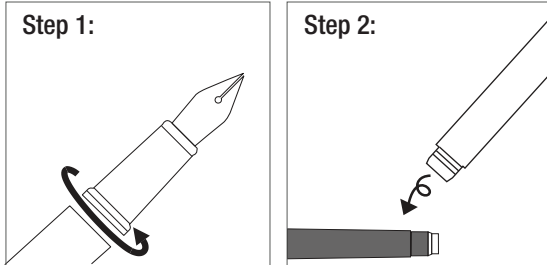


First time use:



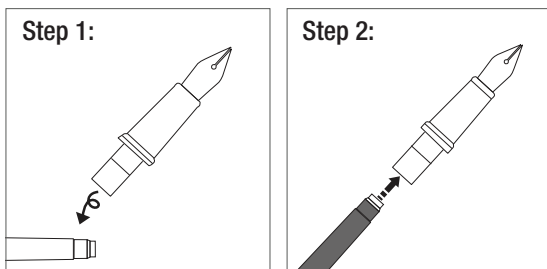
Remove the nib section from the barrel.

Remove the cartridge stored in the barrel.

Use your fountain pen regularly to keep it functioning at its best.

IMPORTANT: When using a cartridge, place a second unopened cartridge back to back inside the barrel to ensure the ink cartridge is fully punctured and in the proper position.

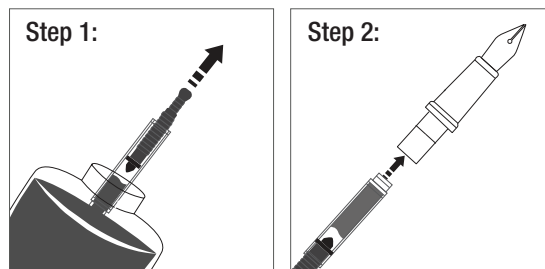
To use ink cartridges:



Pull to remove old ink cartridge from the nib.

Insert new ink cartridge firmly into nib section.

To use the converter:



Draw up ink into the converter.

Insert converter firmly into the nib section.

If changing color of ink, clean the nib before inserting the new ink cartridge. Please see Basic Care & Maintenance Guide for cleaning instructions.

The ink converter can be used to draw up ink or can be used with water to clean the nib of the pen. The converter twist knob moves a piston up and down to create the vacuum suction that draws the fluid into the converter.

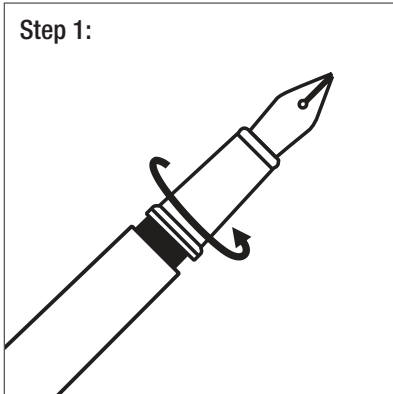
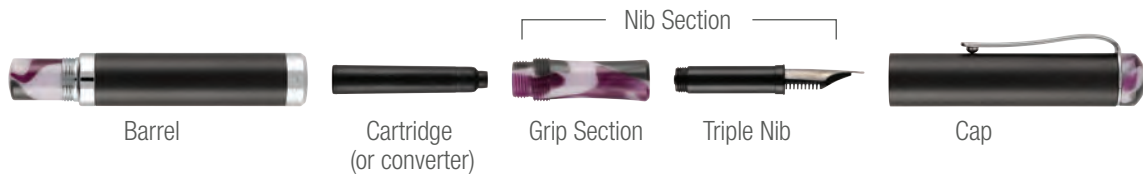
TIPS FOR CARE AND USE:

- Push the ink cartridge or converter firmly into the pen.
- Do not store the ink in direct sunlight.
- Be careful removing the pen cap as force may cause the ink to leak.
- The fountain pen nib is sharp, please be careful and keep away from small children.
- Always keep the cap on when not in use to prevent the ink drying out.
- Cleaning the nib is recommended every 1 to 2 weeks – see Care & Maintenance Guide.
- High-altitude and airplane travel can cause leakage. Please remove the ink cartridge or converter and clean the nib and ink supply system before traveling to avoid any leaks – see Care & Maintenance Guide.

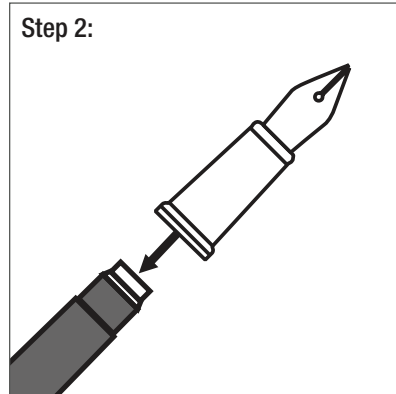
PLEASE NOTE: Additional instructions and videos are available online at JerrysArtarama.com.

Goldenritt *Sketch* Writer Basic Care & Maintenance Guide

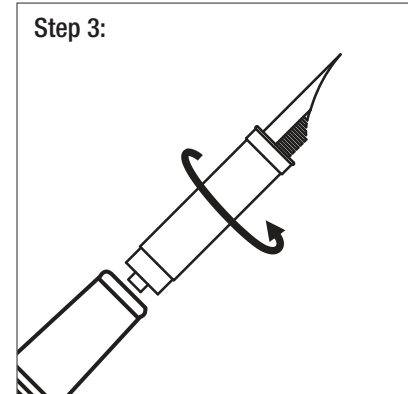
To maximize the life of your nib, we suggest cleaning every two weeks.



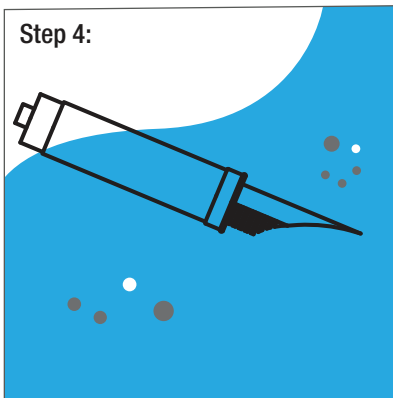
Remove the nib section from the barrel.



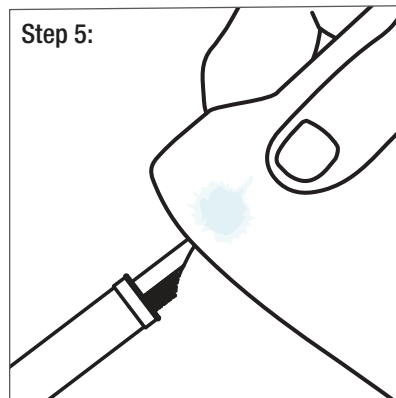
Pull off the cartridge or converter.



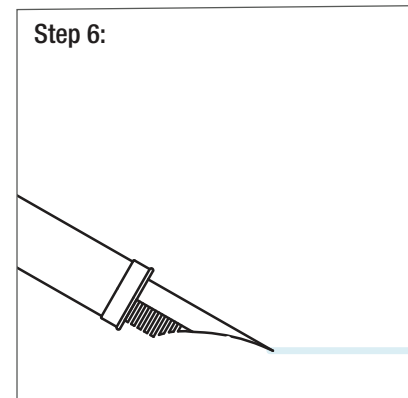
Twist to remove the triple nib.



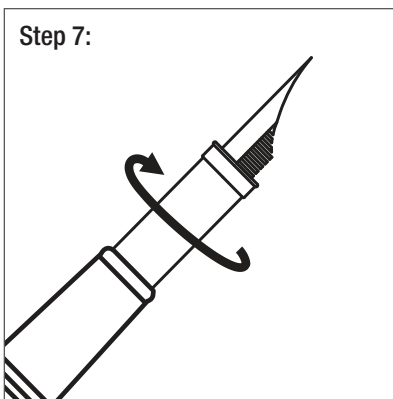
Wash the triple nib with warm water until clean or soak the nib overnight.



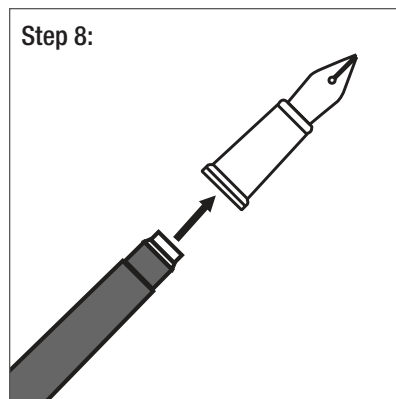
Dry the nib with a cloth. Some ink residue may still be in the nib.



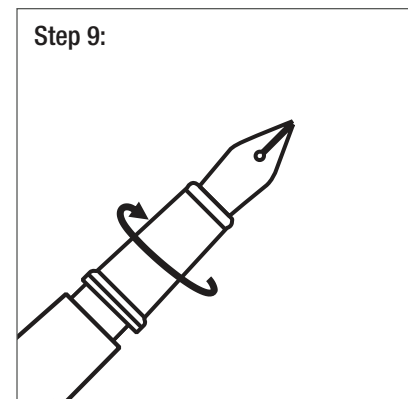
Make sure the triple nib is clean and dry.



Reconnect the nib to the section.



Replace the cartridge or converter.



Reattach the nib section to the barrel.

Maintenance is complete.

