



MULTIMEDIA MULTI-ANGLE  
CONVERTIBLE EASEL

## GUIDE TO ASSEMBLY



Tilts forward!



Any working angle!



Horizontal set up!



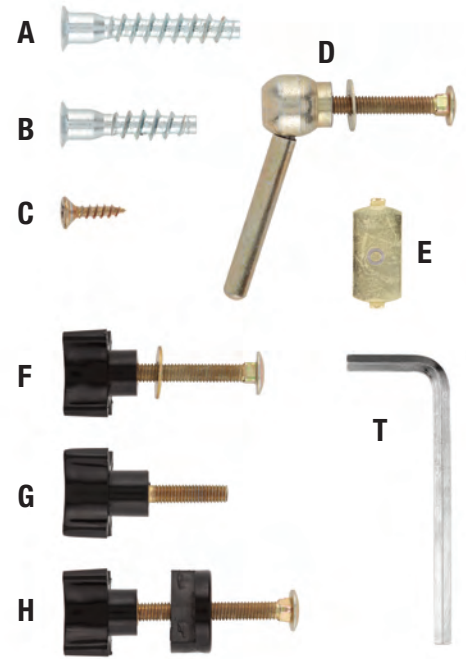
Folds Flat!

- Maximum height: 70"
- Minimum height: 37"
- Base footprint 24"x28"
- Weighs 20 lbs
- Holds canvases up to 45" high

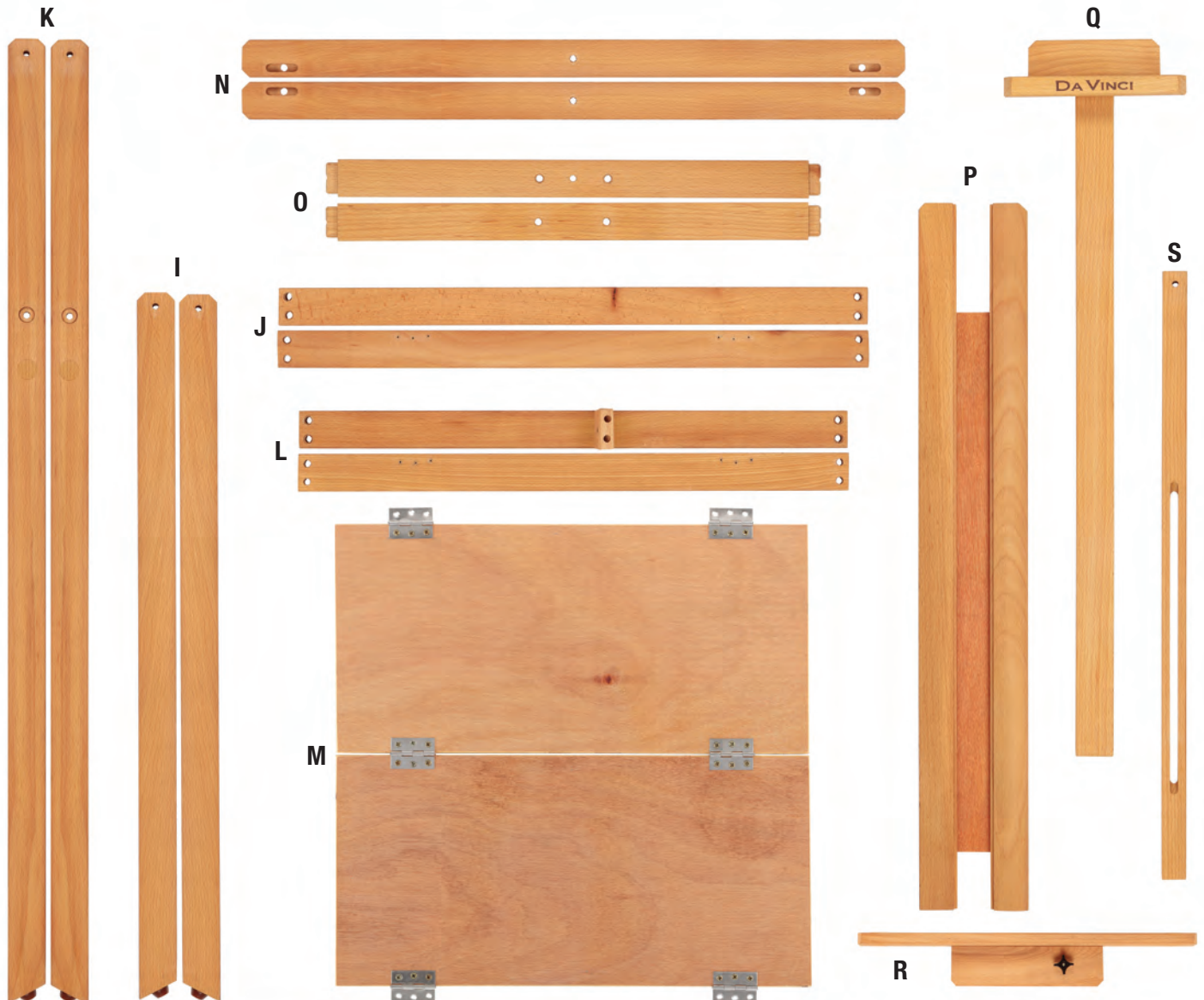
# Hardware & Parts

- A 1½" Allen/Hex Screws ×20
- B 1⅛" Allen/Hex Screws ×4
- C ½" wood screw ×12
- D Pivot handle, washer and bolt ×2
- E Brass pressure plate ×1
- F Knob, washer and 2¼" bolt ×3
- G Knob with attached bolt ×1
- H Knob, channel slider and 2¼" bolt ×1
- I Front legs (left and right) ×2
- J Front leg cross bars (upper, lower) ×2
- K Rear legs (left and right) ×2
- L Rear leg cross bars (upper, lower) ×2
- M Folding shelf with hinges attached ×1
- N Canvas frame sides (left, right) ×2
- O Canvas frame crossbars (upper, lower) ×2
- P Center mast ×1
- Q Top canvas holder mast ×1
- R Bottom canvas holder mast ×1
- S Back support bar ×1
- T Allen/hex key

Phillips head screwdriver will also be needed.



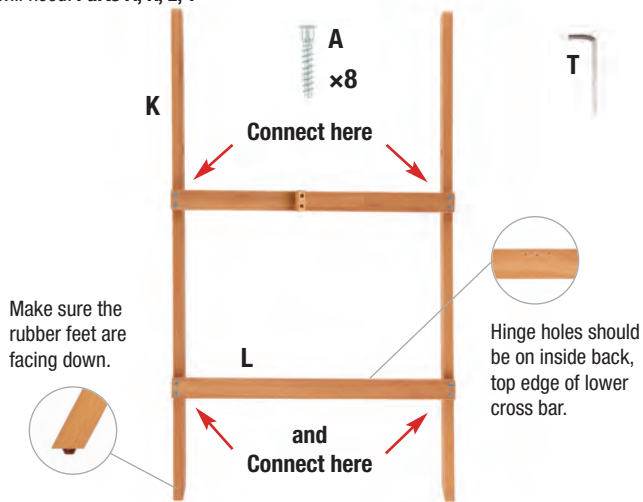
*Carefully check the contents of the box to ensure all parts are included. Be sure to read through and understand all steps before beginning.*



# Assembly Instructions

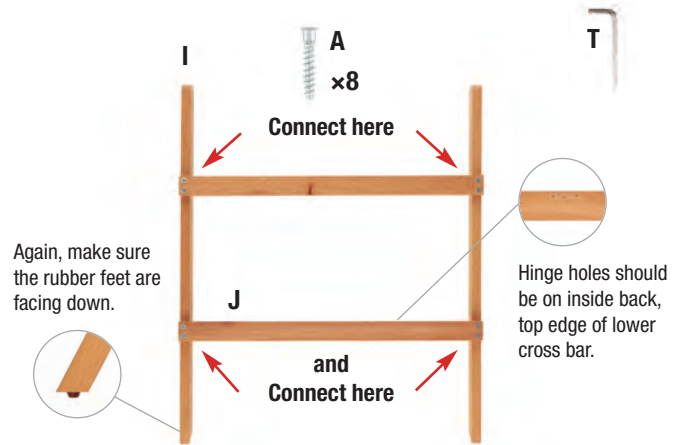
## STEP 1 REAR LEG ASSEMBLY

You will need: **Parts A, K, L, T**



## STEP 2 FRONT LEG ASSEMBLY

You will need: **Parts A, I, J, T**



## STEP 3 JOIN FRONT & REAR LEGS

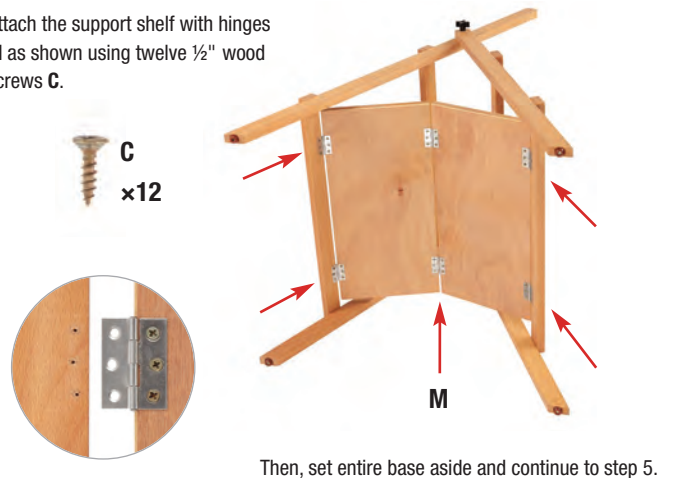
You will need: **Part F, assembled front legs and assembled rear legs**



## STEP 4 ATTACH SUPPORT SHELF

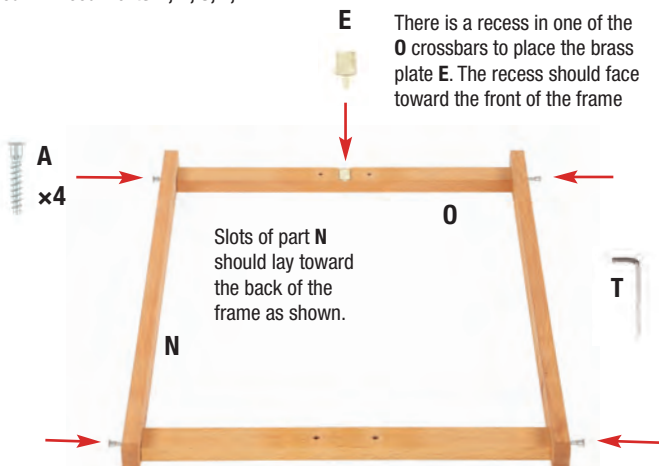
You will need: **Parts C, M, Phillips head screwdriver**

Attach the support shelf with hinges **M** as shown using twelve 1/2" wood screws **C**.



## STEP 5 JOIN CANVAS FRAME

You will need: **Parts A, N, O, E, T**

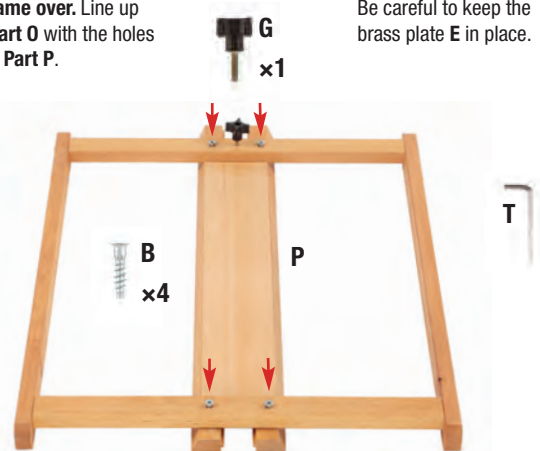


## STEP 6 ATTACH CENTER MAST

You will need: **Part B, G, T, assembled canvas frame**

**Flip entire frame over.** Line up the holes in **Part O** with the holes in the back of **Part P**.

Be careful to keep the brass plate **E** in place.



INSTRUCTIONS CONTINUED ON BACK PAGE

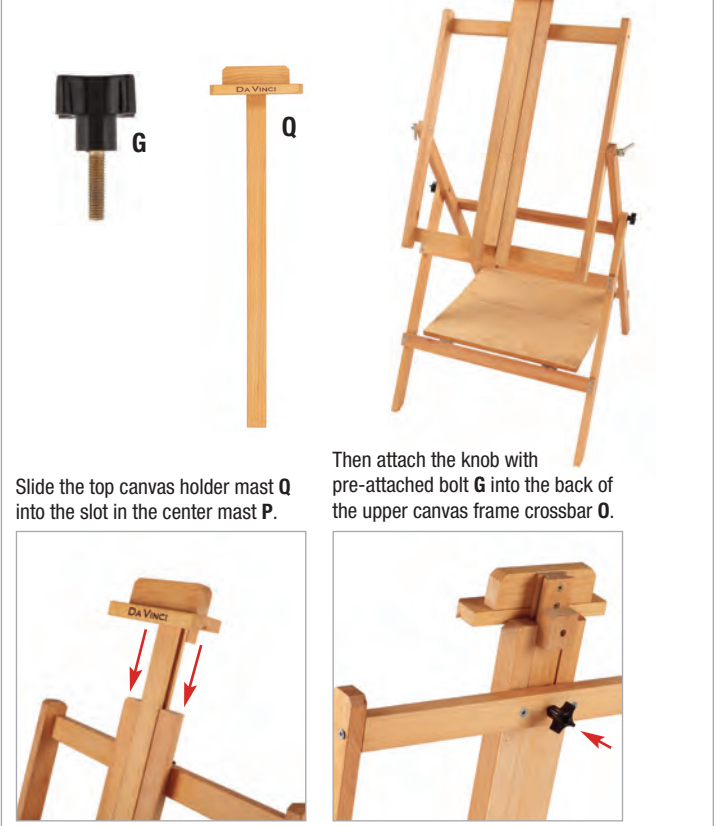
## STEP 7 JOIN FRONT & REAR LEGS

You will need: **Part D, assembled base, assembled canvas frame**



## STEP 8 INSERT TOP CANVAS HOLDER

You will need: **Part G, Q, assembled easel**



## STEP 9 BOTTOM CANVAS HOLDER

You will need: **Part R, assembled easel**

Slide the bottom canvas holder **R** onto the center mast **P** from the bottom of the frame.



## STEP 10 ATTACH BACK SUPPORT BAR

You will need: **Part F, H, S, assembled easel**

