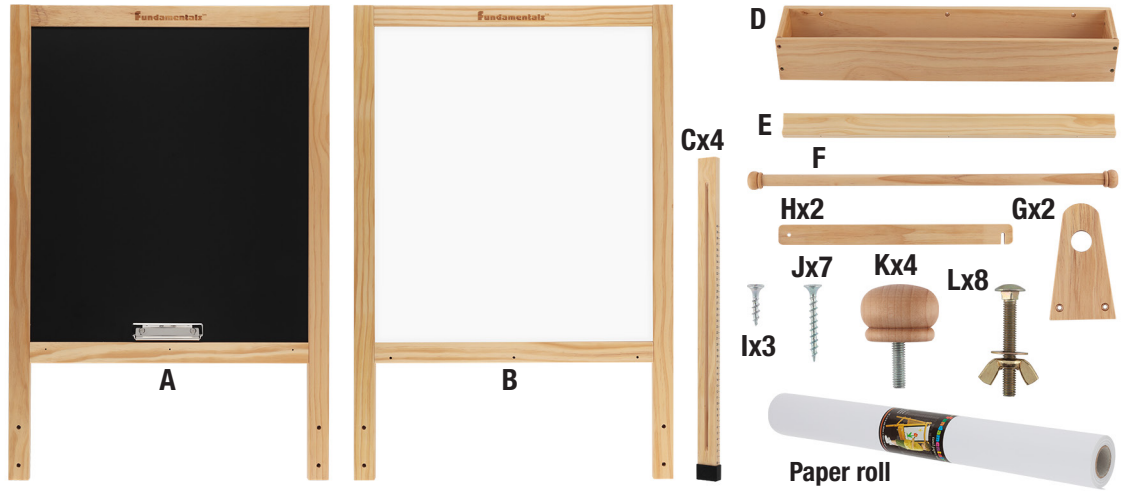


# Fundamentals™

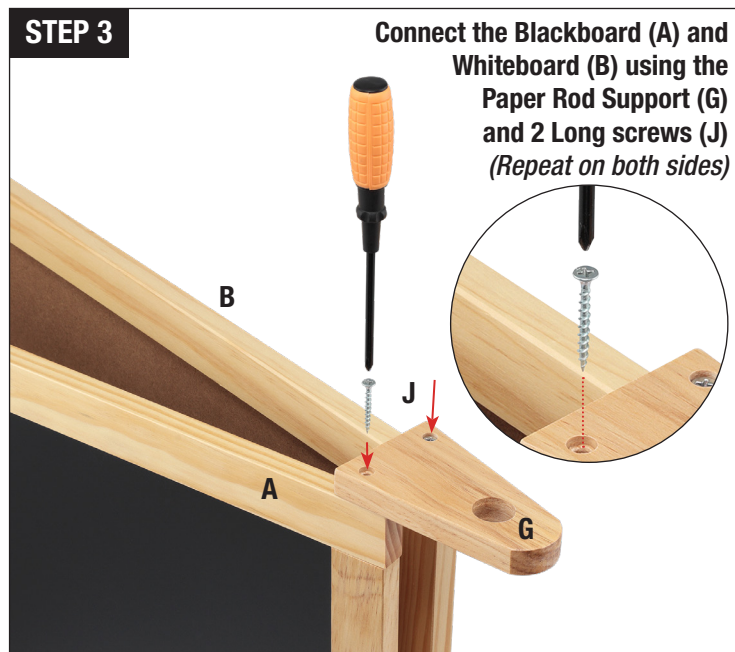
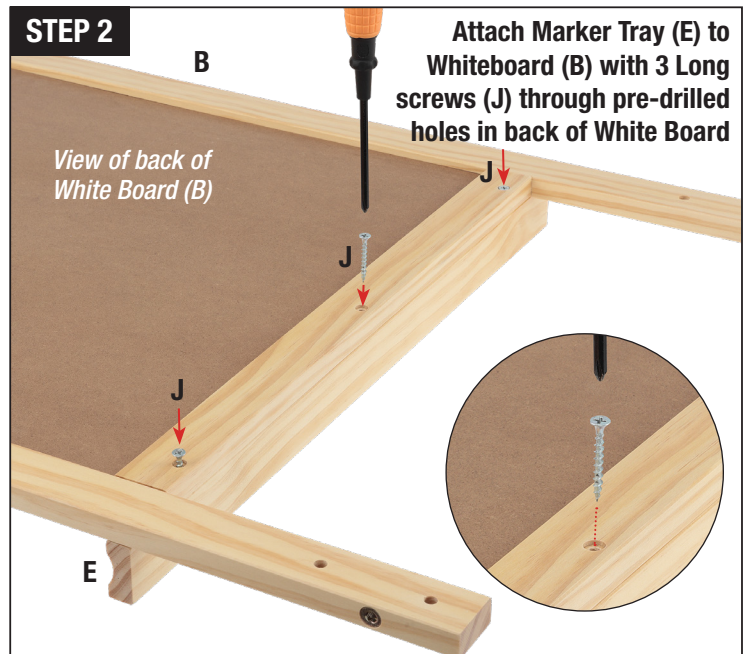
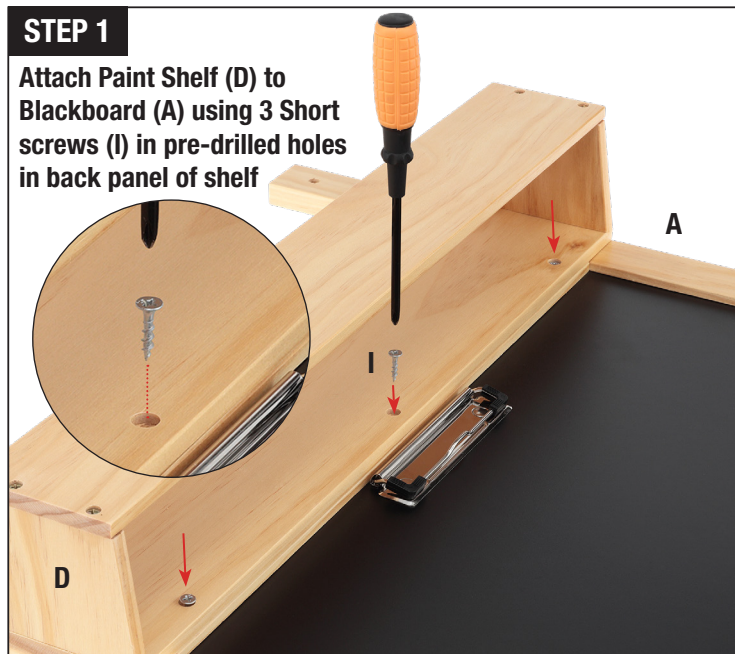
## Easel Assembly Instructions

### Hardware & Parts:

- A. Blackboard (1)
- B. Whiteboard (1)
- C. Leg Extensions (4)
- D. Paint Shelf (1)
- E. Marker Tray (1)
- F. Paper Rod - Wood Knobs (1)
- G. Paper Rod Supports (2)
- H. Notched Cross Supports (2)
- I. Short screws (3)
- J. Long screws (7)
- K. Wooden Knob bolts (4)
- L. Bolt assembly (8 - includes bolts, washers, & wing nuts)



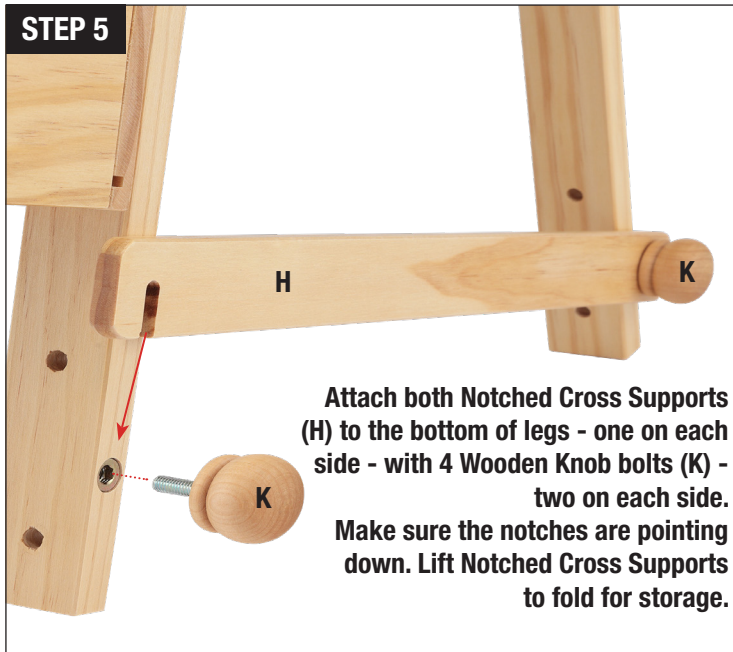
Additional tool needed: Phillips screwdriver



Continued →

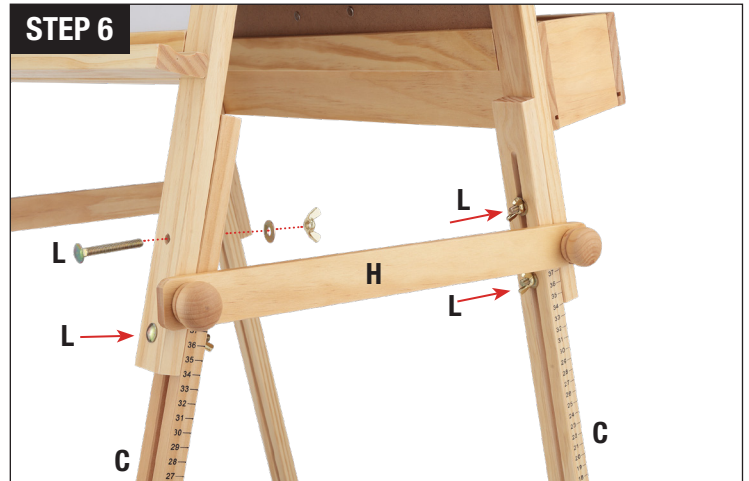
## Continued

### STEP 5



Attach the 4 Leg Extensions (C) to each inside leg, with the numbers facing outward, by inserting 2 Bolts (L) per leg through pre-drilled holes in the front of Whiteboard and Blackboard, attaching washers and wingnuts. Tighten wingnuts after setting the easel at your desired height.

### STEP 6



## Fundamentals™ Easel Assembly Complete

- Three surfaces in one
- Solid wood construction
- Adjusts from 36.5" to 51" tall
- Refillable paper roll

